

Tours

International



Anglican Identity & Heritage
Spirited Pilgrimages

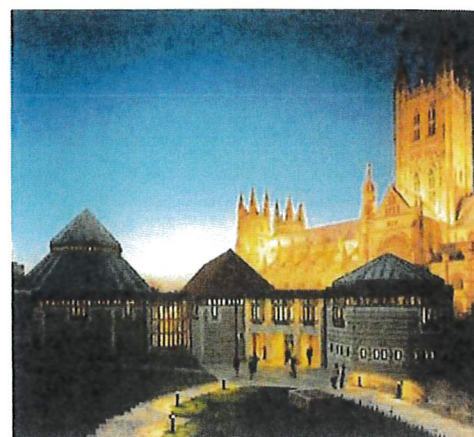
June 13 to 20. 2027

Your hotels

Canterbury Cathedral Lodge - 2 nights

Canterbury Cathedral Lodge is a unique hotel and conference venue situated in the idyllic grounds of Canterbury Cathedral, part of an UNESCO World Heritage Site in the heart of the city of Canterbury. Renowned for stylish and comfortable hotel accommodation with stunning views of the Cathedral and a superb conference venue for meetings, conferences and events, as well as parties and wedding receptions.

**Address : Canterbury Cathedral Lodge Hotel,
CT1 2EH Canterbury, United Kingdom**



Winchester Royal Hotel - 2 nights

The Royal Winchester Hotel blends rich history with modern comfort, making it one of the most regal places to stay in Winchester. Winchester Royal Hotel delivers a blend of luxury and affordability, placing it among the best hotels in Hampshire, with 81 stylish bedrooms, an award winning garden restaurant, and a stunning walled garden.

**Address : Winchester Royal Hotel, SO23 8BS
Winchester, United Kingdom**



Crowne Plaza London Kings Cross - 3 nights

Discover a premium London hotel designed to seamlessly transition between local experiences and business. Located near St Pancras International and Farringdon stations, the Crowne Plaza London - Kings Cross is just steps away from Eurostar, Elizabeth line, and London Underground trains at Russell Square and King's Cross St Pancras stations, with connections to Heathrow Airport (LHR).

**Address : 1 King's Cross Road, WC1X 9HX
London, United Kingdom**



Arrive London Heathrow Airport

Depart with guide and coach and transfer to Kent.

Transfer to city centre. Watch the changing of the guard *(subject to schedule flight arrival times)*

Lunch

Southwark Cathedral standing at the oldest crossing-point of the River Thames at what was for many centuries the only entrance to the City of London situated across the river. A verbal tradition passed on to the Elizabethan historian John Stow suggests that the first Christian establishment was a community of nuns in the 7th century. It is one of the starting points of the Pilgrims Way.



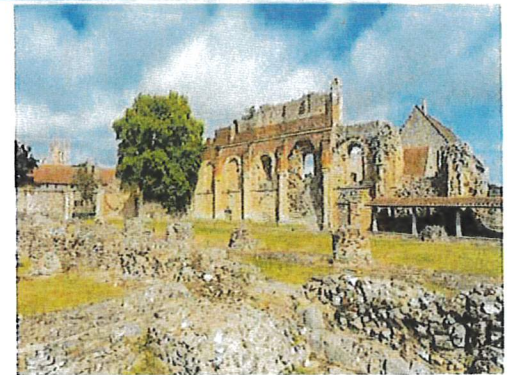
London Eye Enjoy panoramic views of the city as you rotate round the world's largest cantilevered observation wheel.



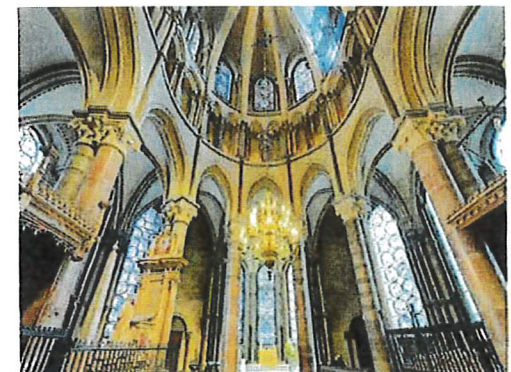
Transfer to Canterbury

Dinner at hotel

St Martin's Church St Martin's is the oldest church in continuous use in the English-speaking world. The oldest part of St Martin's church was built during the Roman occupation of Britain. This church, together with St Augustine's Abbey are key sites representing the earliest Christian foundations in England.



St Augustine's Abbey Founded in AD 598 by St Augustine himself, this once-great abbey proclaims the rebirth of Christianity in southern England. Augustine, a missionary from Rome, baptised the pagan King Ethelbert of Kent, the most powerful Anglo-Saxon monarch and the first to convert to Christianity. To mark his conversion, Ethelbert gave Augustine land to build this very first monastery in Anglo-Saxon England.



Free time for lunch

Canterbury Cathedral With architectural triumphs, spectacular stained glass windows, and magnificent collections – discover all that the Cathedral and its grounds has to offer. Remain the cathedral after your visit to attend Evensong.

Dinner and evening at leisure

Option to attend a morning service at Canterbury Cathedral

Dependant on Cathedral schedule

Transfer to Winchester

Your journey will take you along parts of the Pilgrim's Way.

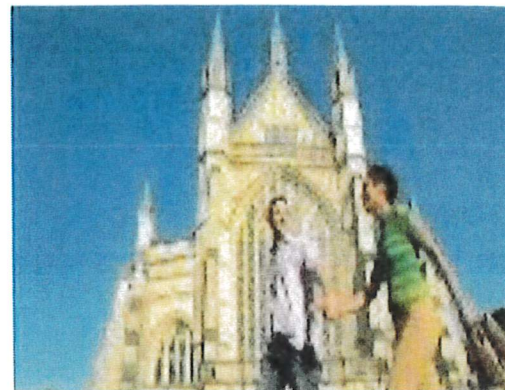
Free time for lunch

Winchester Cathedral

One of England's most historic buildings, Winchester Cathedral boasts centuries of English heritage, magnificent architecture, priceless treasures and works of art. Once the seat of Anglo-Saxon and Norman royal power, this site has played host to Kings and Queens including William the Conqueror, Mary Tudor and Prince Philip of Spain. The shrine of St Swithun, within the cathedral, is the starting point of the Pilgrim's Way walk.

Depending on cathedral schedule - stay for evensong

Dinner at hotel



Stonehenge

Experience the unforgettable atmosphere of the Stone Circle and follow in the footsteps of the prehistoric people who lived here 4,000 years ago as you walk among the Neolithic houses.

Free time for lunch

Salisbury Cathedral

Enjoy the serenity and splendour of this stunning Cathedral, gaze up at Britain's tallest spire, explore Britain's largest Cathedral Close and Cloisters, see the world's oldest mechanical clock and the best-preserved original 1215 Magna Carta – all in one beautiful place.

Dinner and evening at leisure



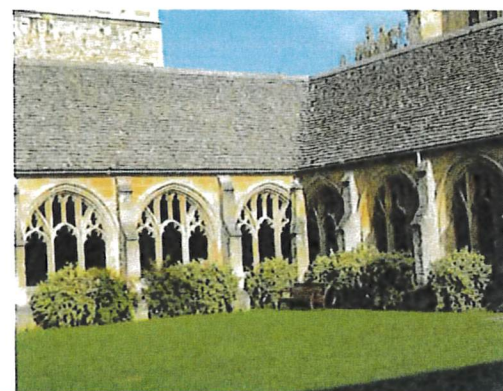
Transfer to Oxford

Walking tour of Oxford A key city in the Anglican Identity and Heritage Trail, which includes sites such as the Bodleian Library, Radcliffe Square, St Mary the Virgin Church and the Martyr's Memorial - a prominent 19th-century monument. It is a key piece of Anglican heritage, built to commemorate three Protestant bishops—Thomas Cranmer, Nicholas Ridley, and Hugh Latimer—who were burned at the stake nearby in 1555–1556 during the Marian persecutions.



Free time for lunch


Christ Church College and Cathedral The site has been a place of worship for more than a thousand years. A monastery was founded here early in the eighth century by St. Frideswide. It has featured in several films and TV series, notably the Harry Potter series.



Afternoon Tea

Transfer to London

Dinner at hotel

Day 6  June 18, 2027 | London

Panoramic City Tour of London Panoramic city tour of London including Oxford and Regent Streets, Piccadilly Circus, Trafalgar Square, London's Theatre District. See The Mall and Buckingham Palace, Big Ben and Houses of Parliament.



Tower of London Explore London's iconic castle and World Heritage Site. Get up close to the Crown Jewels, meet the legendary Yeoman Warders and ravens and see the Tower like never before

Free time for lunch

Westminster Abbey has been at the centre of Anglican royal worship since 1066, shaping the lives of kings, queens, statesmen, soldiers, poets, priests, heroes, and even villains. Remain for evensong



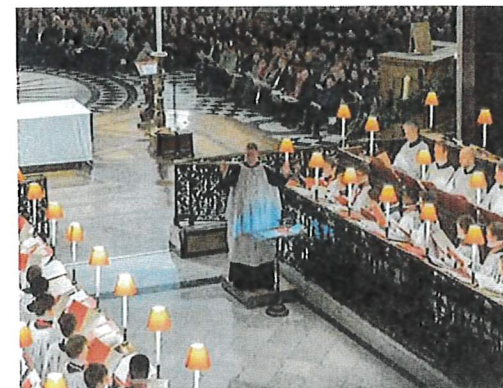
Dinner and evening at leisure

Morning at leisure

St Paul's Cathedral

Explore the magnificent interior of St Paul's Cathedral and uncover a fascinating history that dates back centuries. Experience breathtaking panoramic views from its iconic dome that sits 111 metres (364ft) high.

Remain in the cathedral for evensong.



Transfer from hotel to LHR airport